



Caribbean

Specifications

	2 TOON		3 TOON	
	230	250	230	250
Length (LOA)	26'8"	28'8"	27'	29'
Horsepower	115 HP	115 HP	400 HP	400 HP
Fuel Tank	28 gal	28 gal	77 gal	77 gal
Persons Capacity	10	12	14	13
Maximum Persons Weight	1,460 lbs	1,650 lbs	1,815 lbs	1,765 lbs
Maximum Persons, Motor & Gear Weight	2,070 lbs	2,270 lbs	2,625 lbs	2,790 lbs
Boat Weight	2,957 lbs	3,286 lbs	4,275 lbs	4,118 lbs

For a full list of specifications, visit crestpontoonboats.com.
Not all color combinations may be available. Colors shown are for representative purposes only. See your Crest dealer for details.

FIBERGLASS PANEL COLORS

- Black Metallic
- White Metallic

ACCENT PANEL COLORS

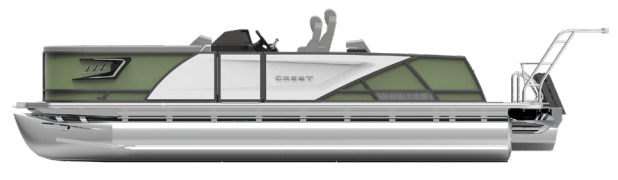
- Stone Gray
- Pacific Blue
- Vintage Violet
- Fire Red
- Forest Green

EXTERIOR FENCE COLORS

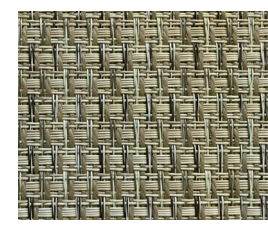
- Black Metallic
- Steel Gray Metallic
- Cabernet Metallic
- Caribou Metallic
- White Metallic
- Navy Metallic
- Sage Green Metallic
- Steel Blue Metallic

COLOR PLACEMENT

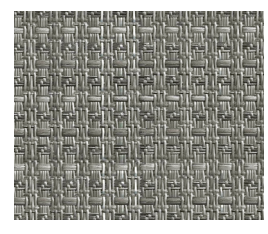
Shown: Sage Green with White Fiberglass Panels



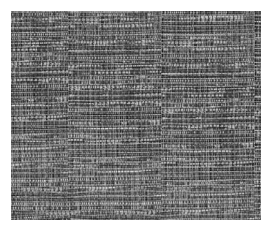
Flooring Options



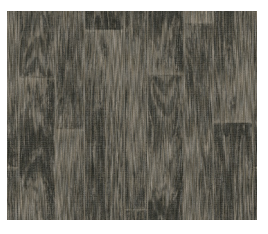
SeaGrass
Tan Blended Tweed



SeaGrass
Gray Blended Tweed



SeaGrass
Fusion Gray
Blended Tweed



SeaGrass
Tan Woven Lakeport
Blended Tweed



SeaGrass
Gray Woven Lakeport
Blended Tweed



SeaGrass Premium
Tan Blended Tweed



SeaGrass Premium
Gray Blended Tweed



Poly Vinyl
Rustic Weathered Gray



Poly Vinyl
Cabin Life

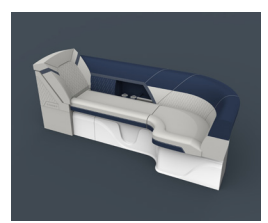
Upholstery Options



Tan



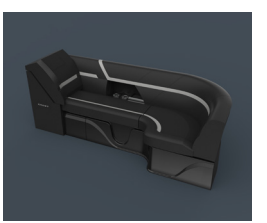
Gray



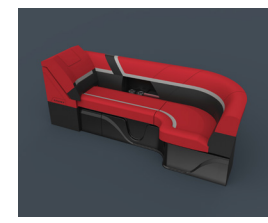
Navy Cool Touch



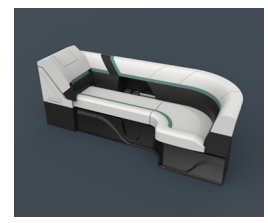
Beach



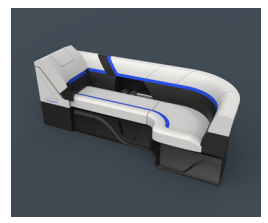
CoolFeel Black



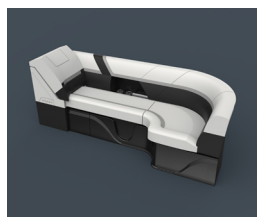
CoolFeel Fire Red



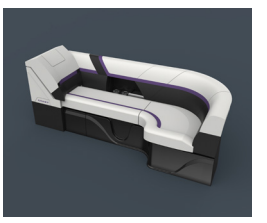
Forest Green



Pacific Blue

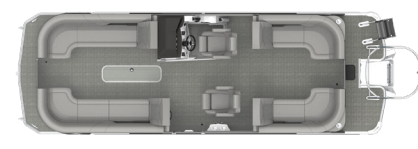


Stone Gray

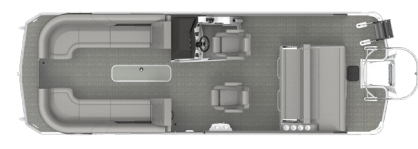


Vintage Violet

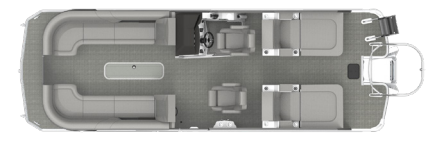
Floor Plan Options



SLC | Portside Captain's Chair
230 | 23' 250 | 25'



SLS | Swing Back Mini L
230 | 23' 250 | 25'



SLRC | Rear Chaise
230 | 23' 250 | 25'

